



INTEGRITY METALS
Architectural Fabrication

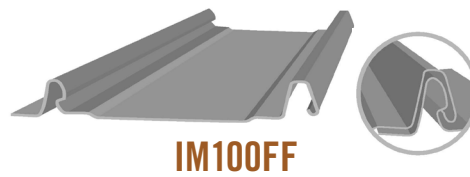
*We've Got You Covered
from Every Angle*

- ✓ Deep Manufacturing & Installation Expertise
- ✓ Industry-Best Protective Coatings
 - ✓ Leading Warranties
- ✓ Complimentary Take-off Service
- ✓ On-Site Production

METAL PANEL SYSTEMS

PROFILE COMPARISON

SNAP LOCK *Fastener Flange* Standing Seam Performance • Budget-Friendly



IM100FF

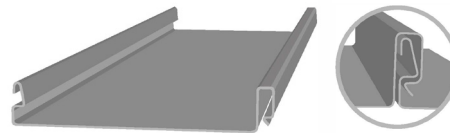


IM150FF

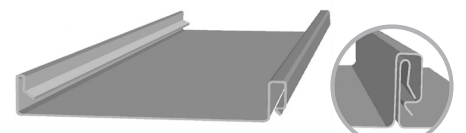
SNAP LOCK *Clip* Versatility, Strength and Beauty • One Easy-to-Install Panel



IM450SL



IM550SL



IM675SL

EXPOSED FASTENER Quick and Easy Installation • Vertically or Horizontally



IM5VC

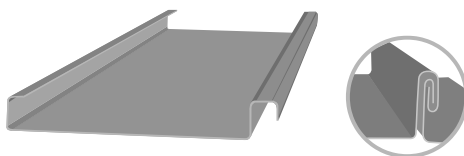


IM36TR

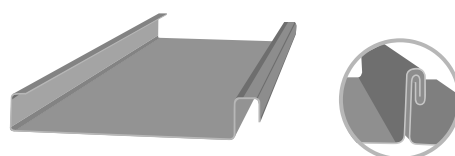


IM36PBR

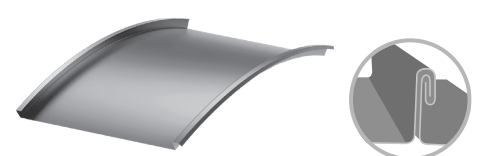
MECHANICAL SEAM Ultra Strong Performance • Undeniably Beautiful



IM100MS



IM150MS



IM150MS-CRV





"We strive to manufacture architectural metal roofing with a guaranteed performance"

		EXPOSED FASTENER PANELS			STANDING SEAM PANELS							
					SNAP LOCK Fastener Flange		SNAP LOCK Fastener Flange			MECHANICAL SEAM		
		IM36TR	IM36PBR	IM5VC	IM100FF	IM150FF	IM450SL	IM550SL	IM675SL	IM100MS	IM150MS	IM150MS-CRV
SPECIFICATIONS	Height†	3/4"	1-1/4"	3/8"	1"	1-1/2"	1-1/2"	1-1/2"	1-3/4"	1"	1-1/2"	1-1/2"
	Coverage†	36"	36"	21", 24"	12" 14" 16"	15" 19"	15.5"	15" 17" 19"	14" 16" 18"	12" - 21"	12" - 20"	12" - 20"
	Minimum Slope‡	1/2:12	1/2:12	1/2:12	1/4:12	1/4:12	1/4:12	1/4:12	1/4:12	1/4:12	1/4:12	1/4:12
	Support	Plywood Wood Plank Open Framing	Plywood Wood Plank Open Framing	Plywood Wood Plank	Plywood Wood Plank	Plywood Wood Plank	Plywood Wood Plank	Plywood Wood Plank	Plywood Wood Plank	Plywood Wood Plank	Plywood Wood Plank	Plywood Wood Plank
	Exterior Wall Panel	✓	✓	N/A	N/A	N/A	N/A	N/A	N/A	N/A	N/A	N/A
SUBSTRATE	Aluminum	N/A	N/A	.032 .040	.032 .040	.032 .040	.032 .040	.032 .040	.032 .040	.032 .040	.032 .040	.032 .040
	Steel (Galvalume®)	29 ga 26 ga 24 ga* 22 ga*	26 ga 24 ga* 22 ga*	26 ga 24 ga* 22 ga*	26 ga 24 ga* 22 ga*	26 ga 24 ga* 22 ga*	26 ga 24 ga* 22 ga*	26 ga 24 ga* 22 ga*	26 ga 24 ga* 22 ga*	24 ga* 22 ga	26 ga 24 ga* 22 ga	26 ga 24 ga* 22 ga
	Copper	N/A	N/A	N/A	Optional	Optional	Optional	Optional	Optional	16 oz.	16 oz. 20 oz.	16 oz. 20 oz.
	Zinc	N/A	N/A	N/A	Optional	Optional	Optional	Optional	Optional	7MM 8MM	7MM 8MM	7MM 8MM
PROTECTIVE COATING	70% PVDF Kynar 500®	✓	✓	✓	✓	✓	✓	✓	✓	✓	✓	✓
	WeatherXL™ (SMP)	✓	✓	✓	✓	✓	✓	✓	✓	✓	✓	✓
	Acrylic-Coated Galvalume	✓	✓	✓	✓	✓	✓	✓	✓	✓	✓	✓
	Tedlar® PVF Film	✓	✓	✓	✓	✓	✓	✓	✓	✓	✓	✓
	Custom Colors	✓	✓	✓	✓	✓	✓	✓	✓	✓	✓	✓
DESIGN OPTIONS	On-Site Production	N/A	N/A	N/A	✓	✓	✓	✓	✓	✓	✓	✓
	Custom Lengths	Up to 50'	Up to 50'	Up to 50'	Unlimited	Unlimited	Unlimited	Unlimited	Unlimited	Unlimited	Unlimited	Unlimited
	Striated	N/A	N/A	Standard	Standard	Standard	Standard	Standard	Standard	Standard	Standard	Standard
	Pencil Bead	N/A	N/A	Optional	Optional	Optional	Optional	Optional	Optional	Optional	Optional	Optional
	Ribbon Bead	N/A	N/A	Optional	Optional	Optional	Optional	Optional	Optional	Optional	Optional	Optional
TEST	Florida Product Approved	✓	✓	✓	✓	✓	✓	✓	✓	✓	✓	✓

*Special order. †All dimensions are nominal. ‡ Minimum slope with sealant per FBC 1507.4.2; consult with local municipality for applicable controlling building codes that may affect your project.

