



INTEGRITY METALS
Architectural Fabrication

MECHANICAL SEAM METAL PANEL SYSTEMS



ULTRA STRONG PERFORMANCE WITH A CLEAN AESTHETIC

Using a hidden clip system, Mechanical Seam panels allow for greater thermal movement and offer exceptional wind uplift resistance. Designed for rigorous conditions, these are the metal panel systems for maximum durability.

PRODUCT ATTRIBUTES

- ✓ 90° or 180° mechanical seam
- ✓ Excellent thermal movement and highest wind uplift pressures
- ✓ No length limit w/ onsite production
- ✓ Striated*, ribbon bead, or pencil bead
- ✓ Available in steel and aluminum in 50+ colors (copper and zinc optional)
- ✓ Finish warranties[†] up to 50 years / Metal warranties[†] up to 25-1/2 years



GOT CURVES?

We can help with that!

Create an overhang or a curved roof line that makes a statement! We specialize in Radius Roofing Systems and associated flashings. From simple stage radius applications to tricky oblong multi-stage radius roofs, we have the answers.

YOUR ONE STOP SHOP FOR METAL ROOFING. STRENGTH YOU CAN TRUST.



Proudly finished with your choice of Kynar 500® (70% PVDF), WeatherXL™ (SMP), Acrylic-coated Galvalume® or Tedlar® PVF film

MECHANICAL SEAM METAL PANEL SYSTEMS

IM100MS 1" Mechanical Seam Panel

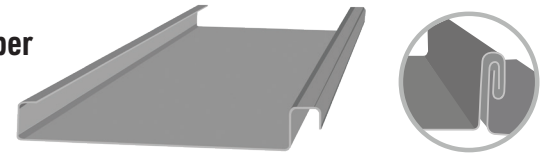
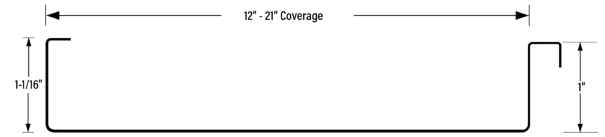
Coverage Width: 12" - 21"

†Slope: 1/4:12 minimum

Rib Height: 1"

Metal/Gauge: 24-Gauge Galvalume / .032 and .040 Aluminum / 16-Ounce Copper

Support: Plywood or Wood Plank



IM150MS 1-1/2" Mechanical Seam Panel

Coverage Width: 12" - 20"

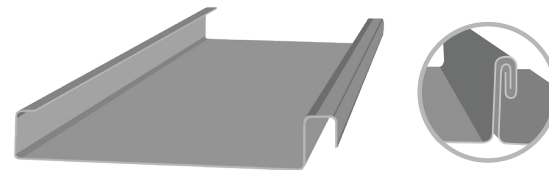
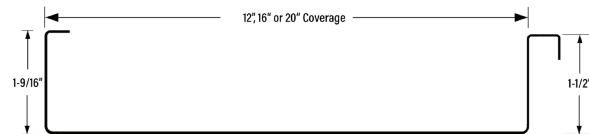
†Slope: 1/4:12 minimum

Rib Height: 1-1/2"

Metal/Gauge: 24- and 26-Gauge Galvalume / .032 and .040 Aluminum / 16- and 20-Ounce Copper

/ 7MM and 8MM Zinc

Support: Plywood or Wood Plank



IM150MS-CRV 1-1/2" Curved Radius Mech. Seam Panel

Coverage Width: 12" - 20"

†Slope: 1/4:12

Rib Height: 1-1/2"

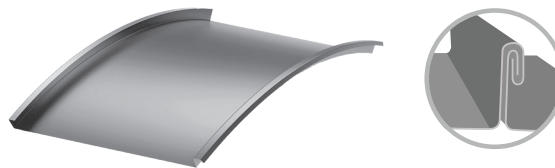
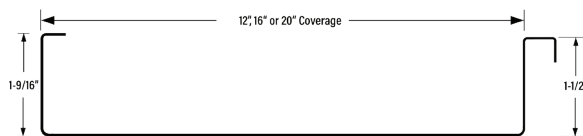
Metal/Gauge: 24- and 26-Gauge Galvalume / .032 and .040 Aluminum /

16- and 20-Ounce Copper /

7MM and 8MM Zinc

Support: Plywood or

Wood Plank



 All panels are Florida Product Approved including HVHZ on most profiles

† Sealant may be required.



Connect with Us!
[@integritymetalsfl](https://www.instagram.com/integritymetalsfl)



integritymetalsfl.com



772-584-2654



sales@integritymetalsfl.com